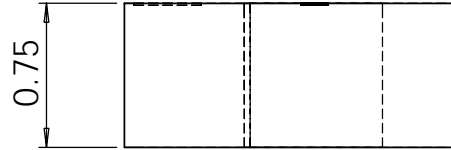
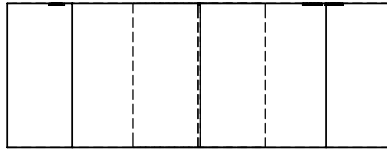


		REVISIONS		
ZONE	REV.	DESCRIPTION	DATE	APPROVED
	B	Added label and chamfer note	5/26/05	AO
	C	Modified tapped hole callout	12/4/05	AO
	D	Added note to engrave serial number	11/30/06	AO

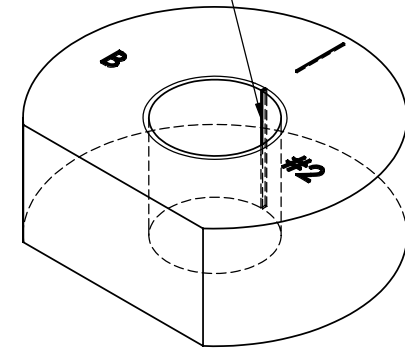
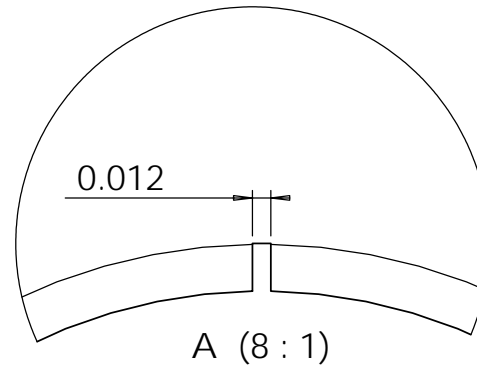
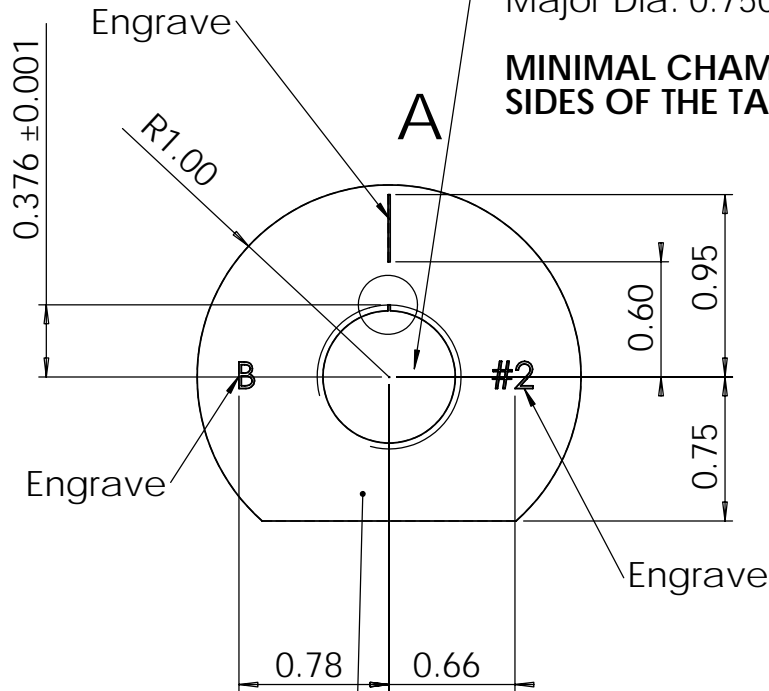


SINGLE POINT TURN ID AND  
THREAD! DO NOT USE THREADMILL!

Tap 0.750-16UNF-2B  
Minor Dia: 0.682-0.696  
Pitch Dia: 0.7094-0.7159  
Major Dia: 0.750 MINIMUM

CUT NOTCH 0.12" WIDE x 0.031" DEEP  
MUST BE BURR FREE, USE EDM. A GO  
THREAD GAGE MUST ROTATE SMOOTHLY  
FULL LENGTH OF THREAD.

MINIMAL CHAMFER ON BOTH  
SIDES OF THE TAPPED HOLE!



Engrave Serial #

**PROPRIETARY AND CONFIDENTIAL**  
THE INFORMATION CONTAINED IN THIS  
DRAWING IS THE SOLE PROPERTY OF  
MCU DESIGNS. ANY REPRODUCTION  
IN PART OR AS A WHOLE WITHOUT THE  
WRITTEN PERMISSION OF MCU DESIGNS  
IS PROHIBITED.

		DIMENSIONS ARE IN INCHES TOLERANCES: FRACTIONAL ± 1/32 ANGULAR: MACH ± BEND ± TWO PLACE DECIMAL ± 0.02 THREE PLACE DECIMAL ± 0.003		NAME AO	DATE 4/10/05	MCU Designs VP Calibration Standard SCBA #2/Paintball 0.750"
		MATERIAL 6061 Aluminum		CHECKED		
		FINISH Anodize Black		ENG APPR.		
		APPLICATION DO NOT SCALE DRAWING		MFG APPR.		
NEXT ASSY	USED ON	COMMENTS: BREAK ALL EXTERNAL SHARP EDGES UNLESS NOTED. ENGRAVING FONT IS NOT IMPORTANT. USE 1/16" BALL END MILL, 0.01" DEEP.		Q.A.		SIZE A
				DWG. NO. VP-3003		REV. D
				SCALE: 1:1	WEIGHT:	SHEET 1 OF 1